

KS1 Welcome Meeting 2017

Mrs Stevenson - Assistant Head KS1

Year 1 Team

1CU - Teacher: Miss Uys
TA: Miss Vass

1SJ - Teacher: Miss Johnson
TA: Mrs Nita

1AA - Teacher: Mrs Allsop
TA: Miss Leonette
LSA: Mr Cranston

Year 2 Team

2AC - Teacher: Mrs Carr
TA: Mrs Scambler

2RG - Teacher: Miss Gurney
TA: Mrs Kent

2AR - Teacher: Mrs Rani
TA: Miss Pedley
LSA: Mrs Richards

Aims for KS1

- Aiming for Excellence - Learning for Life.
- For children to grow both academically and socially.
- To encourage children to be independent and responsible for themselves.
- Year 1 - To ensure a smooth transition from the Foundation Stage.
- Year 2 - To prepare children for the end of key stage assessments - SATs.

What to bring

Each day children need to bring:

- Water bottles.
- Book bags with their reading records.
- Coat, waterproof.

Expectations of Behaviour

- The children are very familiar with the Millbrook Message Rules and Consequences.

We always try our best

We take responsibility for ourselves, others and the environment

We make the right choices

We think before we do something

We reflect on our experiences

We try never to do or say anything that makes another person unhappy

- The Millbrook Message is an expectation for all children.
- Reinforcement from home is essential.
- If you have any concerns about your child's behaviour in school, please make an appointment to see your class teacher or the Key Stage Leader.

Targets

- All children will have targets that they are working towards in reading, writing maths and science.
- Target sheets will be in the front of books for the children's reference.
- Copies of the targets will be shared at parents evening.
- Pupils will be assessed against working at 'age related expectations' for their current age group. At the end of the year we will assess if your child is:

Emerging

Expected

Exceeding



Integrated Topic

- At Millbrook we aim to make links and teach all the subjects through a theme. The topics in KS1 are:

Year 1	Year 2
Autumn - My Local Environment Spring - Super Heroes Summer - Fairy Tales	Autumn - Houses and Homes Spring - Famous People Summer - Toys

- We will be using a variety of learning approaches to support and enhance all children's preferred learning styles.

Trips and Educational Visits

Year 1

Autumn

Local Area Walk (My Local Environment)
Forest School

Spring

Visit from Stories and More
(Superheroes)

Summer

Windsor Castle (Fairy Tales)

Year 2

Autumn

Local Area Walk (Houses and homes)

Spring Term

Roald Dahl Museum (Famous People)

Summer Term

Wycombe Museum (Toys)

Reading

- Children will read and discuss books within a group (guided reading) as well as read 1:1 at least once a week .
- Reading books will match up with the developing phonics knowledge of the children.
- Children will have a set day each week to change their reading book. Continue to re-read books to build up fluency and confidence in word reading. This also helps with the retelling and understanding of the text.
- Develop a love of reading and broaden children's vocabulary.
- Develop comprehension and fluency.
- Library days are:
 - Year 1 - Tuesday *(with the exception of 1AA for Autumn term who a Monday)*
 - Year 2 - Friday

Writing

Children need to:

Year 1

- Encode the sounds they hear in words (spelling skills). This is linked to phonics lessons.
- Spelling - Year 1 common exception words list and days of the week.
- Develop the physical skills needed for handwriting.
- Learn how to organise ideas into writing.
- Begin to punctuate sentences using capital letters and full stops.

Year 2

- Segment spoken words into phonemes and spell words correctly.
- Spelling - Year 2 common exception words.
- Joined up handwriting.
- Writing to make sense.
- Punctuate sentences using capital letters, full stops, exclamation marks and commas for a list.

Phonics

- All children are required to take part in the Year 1 phonics screening test. Children in year 2 who didn't participate or achieve the pass mark in year 1 are also required to do the test.
- Summer term.
- More information will be shared nearer the time.
- All children are given plenty of preparation for this during daily phonics lessons.

www.phonicsplay.co.uk

Maths

Main focus of maths is to ensure that children develop confidence and mental fluency with whole numbers, counting and place value.

Areas you can help with:

Year 1

- Counting, reading and writing numbers to 100.
- Counting in multiples of two's fives and tens.
- Practising number bonds.
- Recognising and knowing the value of coins and notes (£ and pence).
- Days of the week and months of the year.
- Telling the time to the hour and half past the hour.

Year 2

- Recall multiplications & division facts for 2, 5, 10 tables.
- Continue practising number bonds.
- Using money (finding amounts/change).
- Telling the time to five minutes, including quarter past/to the hour.
- Continue to practise year one areas developing recall at speed.

Jigsaw - PSHE

The key areas are:

➤ **Being me in my world**

Y1 & Y2 - Roles, responsibilities, choices and consequences

➤ **Celebrating Differences**

Y1 - Understand how differences make us special and unique

Y2 - The values of differences

➤ **Dreams and Goals**

Y1 - Explaining feelings when you succeed

Y2 - Working cooperatively

➤ **Healthy Me**

Y1 - Keeping myself safe and healthy

Y2 - Healthy foods and my body

➤ **Relationships**

Y1 - Appreciating people who are special to us

Y2 - Conflicts and how to resolve them positively

➤ **Changing Me** (*meeting for parents in spring term*)

Y1 - How girls and boys bodies are different and which parts are private

Y2 - What I like/don't like about being a girl/boy

End of Key Stage 1 Assessments (Year 2)

- Assessments are a small part of the teacher's overall judgement.
- Takes account of achievement in a range of contexts.
- Assessment are undertaken in spelling, grammar, punctuation (SPAG) reading comprehension, and maths.
- Administered by the class teacher.
- More information will be shared nearer the time.
- **NO PRESSURE!** All children are given plenty of preparation throughout the year.

Homework

- All children - 10mins reading daily. Every child has a Reading Journal to be filled in when they read. Please sign your child's reading journal.
- Learning Logs will be given out on Friday then to be handed back in the following Wednesday.
- Phonics homework may be sent home.
- My Maths.
- During longer school holidays children will be given a holiday homework pack.
- There is a homework club in school during lunch time. Any child can attend and get help with their learning log.



Learning Logs

- The children will have a homework book in which to complete a project.
- Children will be encouraged to record their ideas in their own way.
- Encourage your children to be as independent and creative as possible.



P.E. Requirements

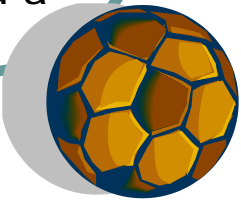
- Please make sure that everything is named.
- Only stud ear rings allowed in school but must be removed for swimming, games and PE.
- If children can't remove earrings themselves then they should be taken out before school in the morning.
- Hair to be tied up and hair clips and hairbands removed.

PE Kit

- Indoor PE days this term are:

1CU - Monday	2AC - Tuesday
1SJ - Thursday	2RG - Tuesday
1AA - Wednesday	2AR - Monday

- Outdoor PE (unless you have swimming) is on a:
Year 1 - Tuesday
Year 2 - Friday
- PE Kit can be kept at school in a drawstring PE bag.
- Please ensure that your child has the correct coloured T-Shirt to match their house team.
- PE kit should consist of bare foot or plimsolls for indoor games. During colder weather or outdoor games children need outdoor trainers and a black tracksuit.



Swimming

- Each class will swim for half a term on a rolling timetable. The sessions will take place on a Tuesday.

1CU - Autumn 1 & Spring 2 1SJ - Autumn 2 & Summer 1 1AA - Spring 1 & Summer 2	2RG - Autumn 1 & Spring 2 2AR - Autumn 2 & Summer 1 2AC - Spring 1 & Summer 2
---	---

- A swimming hat is required for both boys and girls.
- Girls try not to wear tights on swimming days.
- Verruca socks must be worn if you have a verruca.

Forest School (Year 1)

- Part of the curriculum for Autumn term and is linked to our topic, 'Our Local Area'
- Class will split into half and attend 6 sessions.
- Children have the opportunity to explore the woods and complete different activities each week, such as climbing trees, creating art work with natural resources and possibly even toasting marshmallows on a camp fire!
- Children need to wear appropriate clothing.



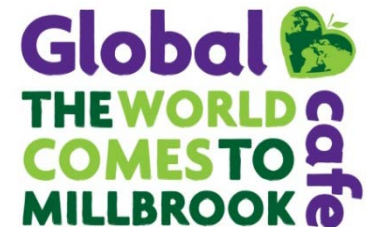
Medical

- The correct forms must be filled in for prescription medication.
- Any prescription medication must come to school in the box with the printed label on.
- Parents must ensure that all inhalers or epi-pens in school are in date.
- Any antibiotics that can be given outside of school hours are recommended.
- Staff will not be able to administer prescription medicines to a pupil.
- Children are not permitted to have any creams, throat sweets or eye drops on themselves or in their bags.

No non-prescribed medicines are allowed in school.

KS1 Lunches

- All KS1 children are entitled to a free school lunch.
- Please encourage your children to take this up (if you haven't already done so).
- Fantastic catering team and menu at the Global café!



Healthy Lunchboxes

- If your child is still having a packed lunch then please ensure that you continue to give your child a healthy lunchbox.
- No nuts or chocolate bars please.

A healthy lunch = better behaviour & learning!

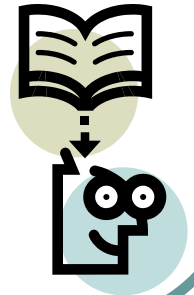


Polite Reminder

- Children may begin to enter the school building from 8.40am, school starts at 8.50am sharp.
- Children should be collected from the playground at 3.15pm by an adult. Please inform the office if somebody else will be collecting your child.
- Children must be supervised by an adult on the playground before 8.40am and after they have been collected.
- If your child is unwell and will not be attending school, please phone the school office.
- When your child returns to school, please send an absence note in.

Dates to remember:

- Individual photographs will be on Monday 16th October
- Parent evenings are on:
 - Tuesday 10th October
 - Wednesday 11th October
- KS1 Christmas production:
 - Tuesday 12th December (2pm)
 - Wednesday 13th December (10am)
- Pantomime - Thursday 14th December



Thank You!

Please let us know if any contact details change.

Do not hesitate to contact the school if you wish to speak to any of the staff. We will always be able to make an appointment to see you.

Any questions?

